

Neighbourhood profile update Cambridge City West Neighbourhood

December 2010



Jayne Drury, Neighbourhood
Policing Sergeant

Lynda Kilkelly, Safer
Communities Manager,
Cambridge City Council



1. INTRODUCTION	2
Aim	2
Methodology	2
2 PREVIOUS PRIORITIES & ENGAGEMENT ACTIVITY	3
Previous Priorities	3-6
Engagement Activity	6
3 AN INTRODUCTION TO ASB IN CAMBRIDGE CITY	7
4 EMERGING ISSUES	8-12
5 CURRENT CRIME & INCIDENT LEVELS	13-15
6 RECOMMENDATIONS	16

1. Introduction

Aim

The aim of the Neighbourhood profile update is to provide an overview of action taken since the last reporting period, identify ongoing and emerging crime and disorder issues, and provide recommendations for future priorities and activity in order to facilitate effective policing and partnership working in the area.

The document should be used to inform multi-agency neighbourhood panel meetings and neighbourhood policing teams, so that issues can be identified, effectively prioritised and partnership problem solving activity undertaken.

Methodology

This document was produced using the following data sources:

- Crime and Incident data, from August 10 – November 10 and as a comparison data from April 10 – July 10, and August 09 – November 09.
- Information from the Neighbourhood Policing teams, December 2010
- Community intelligence.

2. Previous Priorities & Engagement Activity

Previous Priorities

At the neighbourhood panel meeting on 26th August 2010, the following issues were adopted as priorities. The tables below summarise action taken and the current situation regarding the priorities which were set:

<Priority> Theft of Cycles – Market Ward	
Objective	<p>1. To reduce theft of cycles from Market Ward between 01/09/10 and 01/12/10 compared to the same period in 2009 and compared to the 3 month period immediately prior to the period.</p> <p>2. To promote crime prevention initiatives including physical measures, promotion of immobilise and other methods to aid identification and recovery of stolen bikes.</p>
Action Taken	<p>The action plan records 97 hours of Market-based patrol time from the local neighbourhood team, in addition to daily tasking from the pool of reactive officers who patrol the city. This reflects the status of cycle crime as a city-wide priority of the Community Safety Partnership.</p> <p>The latter reactive patrols resulted in approximately 350 hours of patrol time invested in cycle crime patrols in Market and adjacent wards notably Trumpington (Newtown) and Petersfield during the period.</p> <p>A range of tactics have been used including both uniform and plain-clothes staff. A number of successful operations have netted low to medium scale handlers of bicycles identified as stolen from the City Centre area through search warrants. A number of suspects have also been identified from web based sites used to sell stolen bikes and parts.</p> <p>As a result of significant investment in the development of community intelligence around cycle thefts and proactive use of officers, the detection rate for cycle theft is improving and now stands at its highest point for many years and double that of the year to date detection rate in 2009. However, despite such activity, the volume of cycles stolen remains high with a peak in October in keeping with previous year's profile.</p>

	Objective two is still being pursued by the work of the City Community Safety Acquisitive Crime Task Group, who are currently working in six areas across the City identified from 3-5 year analysis as cycle crime hotspots. The focus is target-hardening, engaging residents and commercial partners and seeking to focus on prevention.
Current Situation	Objective one was not achieved, with a notable increase in thefts, peaking in October. 533 cycles were stolen in the period, compared to 358 in the same period last year. Of note and in keeping with the seasonal profile, thefts of cycles in December have been significantly lower with only 24 taken at the time of writing in the 20 days.
Continue or Discharge?	Continue

<Priority> Anti-social Congregation in Public Spaces – Market Ward	
Objective	<p>1. To reduce reports of anti-social behaviour and Streetlife - related crime in the target areas compared to the same time period immediately before action plan activity and a reduction compared to the same period last year.</p> <p>2. To seek to evidence qualitative improvements in the quality of life of those resident, working and visiting the areas where the congregation and alleged behaviour is occurring.</p>
Action Taken	<p>104 hours of dedicated Streetlife-related patrols have been logged in the action plan, in addition to the deployment of two full-time officers.</p> <p>The plan initially focused on key locations in and around the Grafton Centre and Eden Chapel but sought to encompass all areas of the ward where officer observation and community feedback evidenced problematic congregation.</p> <p>Specific patrols have resulted in 10 arrests for drunken and aggressive behaviour, 10 reports for summons for begging and the use of Section 27 dispersal powers on 15 occasions</p>

Current Situation	<p>There has been a decrease in numbers of Streetlife-based anti-social behaviour incidents (see below) compared to the immediately previous period. Both periods share both inclement and clement spells of weather conditions but the very recent 'cold snap' has been significant in reducing reports.</p> <p>A recent meeting with the commercial sector in the Grafton area reveals some improvements and some positive feedback, but focus needs to continue.</p>
Continue or Discharge?	Continue.

Other Key Issue - speeding and anti-social use of vehicles across the city west area

It was unclear to some attendees whether this issue was agreed as a third priority. Whilst it was not formally prioritised it was nevertheless agreed that action would be taken to clarify issues of enforcement and monitoring of the new 20mph limit in the city centre.

Whilst it is felt by the police that the ownership of the 12 month 20mph limit trial in the city centre is owned by the County Council and should include elements of education and road engineering to reduce mean speeds, it has been agreed that the police will help the trial by undertaking some speed checks where it is felt they are needed.

In the last period 26 hours of specific speeding enforcement time was undertaken during the period with focus on the new 20mph zone in Maids Causeway and the main city-bound route from the A14 along Huntingdon Road.

Fifteen motorists were issued warning letters following exceeding the 20 mph limit in Maids Causeway during checks there. The highest speed recorded was 34 mph. There were no cases of excess speed recorded during the Huntingdon Road checks.

In addition to static speed checks, mobile patrols of other traffic related hotspots were conducted based on feedback. Eleven tickets were issued

during the additional hotspot patrols with notable issues remaining at the St Andrew's Street taxi rank along with parking concerns at Elm Street.

Two notices were issued to drivers for the anti-social use of vehicles for particularly unsafe examples of driving. The notices permit the seizure of the vehicle (or any other vehicle) if used by the driver in a further anti-social way.

Engagement Activity

Engagement events permitting members of the public to meet the City West and other Cambridge City Neighbourhood Policing Teams are listed on the Constabulary's website.

They include monthly surgeries at The Central Library, Co-op, Histon Road and The Newnham Croft School

For more private matters, officers will be happy to arrange a meeting at your convenience or discuss matters via telephone.

For further details please visit www.cambs.police.uk and look for the "My Neighbourhood" link or call 0345 456 456 4.

3. An Introduction to Anti-Social Behaviour (ASB) in Cambridge City

It has been noted from recent Cambridge City Neighbourhood Panel Meetings that Anti-social behaviour (ASB) issues are at the forefront of public concern. To address these concerns, this document will now provide more information about the types of ASB issue faced in each Ward through the inclusion of an additional breakdown of ASB types. A summary of emerging issues within crime will still be provided.

When an incident is reported, it is given a Closure Class which groups the incident under specific categories. The specific closure classes for those incidents defined as ASB are included in Table.1

Table.1 ASB Closure Class Definitions

ASB	Description
AS02.2	Street Drinking
AS03.1	Begging/Vagrancy
AS04.1	Prostitution related activity
AS05.1	Abandoned Vehicle (not stolen/obstruction)
AS05.2	Vehicle Nuisance/Inappropriate Veh use
AS06.0	Noise
AS07.1	Litter/Drugs Paraphernalia
AS07.2	Inappropriate - Use/Sale/Possession of Fireworks
AS07.5	Rowdy/Nuisance - Neighbours
AS07.6	Rowdy or Inconsiderate Behaviour
AS08.1	Hoax Call to Emergency Services
AS09.1	Animal Problems
AS10.1	Malicious/Nuisance communication
AS10.2	Regular caller - HIST INFO
AS11.1	Trespass
AS12.1	Prejudice Incident

4. Emerging Issues

Neighbourhood trends

Total crime in City West has increased during the last four months, with each month recording higher levels of crime than in the same months last year. Crime was also significantly higher than in the preceding four months (555/1401, 40% increase). This increase can be seen across all three wards, but in particular, Market ward. The two crime types that have seen substantial rises (in comparison with the preceding months and the same period last year), are cycle theft and theft from vehicles, and this has been seen across all wards. Levels of reported anti-social behaviour have increased in comparison with the previous period, but have fallen in comparison with the same period last year.

Newnham

- Total crime in Newnham ward has increased compared to the previous period and the same period last year.
- There were eight dwelling burglaries this period, which although is lower than the previous period (17), it is similar to the same period last year (7). A common MO for these offences was to force open doors or windows to gain entry.
- Non dwelling burglaries were relatively high, with 15 recorded. Bikes were stolen from sheds in most offences; however there were three separate offences of metal stolen from a college laboratory.
- Theft from vehicles has almost doubled to 37 (from 19 in the preceding period) and more than doubled in comparison with the same period last year (16). Five offences occurred on Cranmer Road and three at Ridley Hall. Typically, vehicle windows are being smashed and handbags and small portable items are being taken.
- Cycle theft offences remained high, with colleges being targeted: Robinson College, Kings College, Clare College, Queens College and Ridley Hall. Offences occurred at all times of the day/night.
- ASB incidents increased to 45 from 37 in the previous period. Seven incidents related to rough sleepers in the grounds of Kings College, which appears to be a regular problem.

Environmental Issues

- Between July and October there were 7 reports of abandoned vehicles in the ward, compared with 13 during the same period the previous year. This included one vehicle, which was later claimed by its owner

and another vehicle, which was not on site following inspection. In addition, 3 CLE26 notices were issued to offenders on behalf of the DVLA for not displaying road tax on a public highway and will result in fines issued by the DVLA. Two vehicles were also impounded and are currently pending further investigation. There were no hotspots during the 2010 period, but Clerk Maxwell Road was a hotspot during the same period the previous year with 3.

- Between July and October there were 15 reports of flytipping in the ward, compared with 13 during the same period the previous year. There was sufficient evidence to issue a warning letter to a domestic offender and a verbal warning to a trade offender. In addition, waste transfer documentation was requested from two trade offenders. Lammas Land was a hotspot during both periods with 7 during the 2010 period and 5 during the same period the previous year.
- 32 derelict cycles were dealt with between July and October, compared with 10 during the same period the previous year. Hotspots during the 2010 period were Queen's Road (6), Cobbalts Corner and Lammas Land (both with 5) and Barton Road (3)
- Between July and October during both years, there were no needles reported.

Castle

- Total crime in Castle ward is higher than the previous period and the same period last year. Dwelling burglaries were lower than in the preceding period and the same period last year, with 17 recorded. Most offences occurred during the day, with a hotspot of four offences on Windsor Road. A common MO used by the offenders was to obtain garden implements from the shed and then use them to break in. Insecurities were also seen, and two student flats at St John's College were targeted.
- There were 19 thefts from vehicles which similar the preceding period and the same period last year. These were evenly spread out over the period, with most occurring in the evening or overnight. Two cars and a van had property stolen whilst parked in St John's College (different times). Most often, windows were smashed and laptops and sat navs taken.
- Theft of cycles was high, with multiple offences recorded at Trinity College (8), St John's College (6), New Hall (5) and Churchill College

(3). Most bikes stolen were secured to a permanent fixture, but some had been locked to the bike frame only, and some had been left in front/rear gardens. Bikes also had parts stolen from them, such as wheels or handlebars.

- Anti-social behaviour levels have increased to 50 incidents in the current period, which is 15 incidents fewer than in the same period last year. Four incidents were recorded at Trinity College: two relating to trespassers and two regarding buskers. There were seven incidents of abandoned vehicles/vehicle nuisance in the residential streets near Huntingdon Road.

Environmental issues

- Between July and October there were 4 reports of abandoned vehicles in the ward, compared with 12 during the same period the previous year. This included one vehicle, which was later claimed by its owner and 2 vehicles, which were impounded on behalf of the DVLA for not having valid road tax, but were subsequently released following payment by the owner of the DVLA fine. There were no specific hotspots during either period.
- Between July and October there were 12 reports of flytipping in the ward, compared with 11 during the same period the previous year. There was insufficient evidence to pursue formal enforcement action and there no were specific hotspots during either period.
- 11 derelict cycles were dealt with between July and October, compared with 6 during the same period the previous year. Windsor Road (3) was a hotspot during the 2010 period and there were no specific hotspots during the same period the previous year.
- Between July and October there were 36 needles reported, compared with none during the same period the previous year. This was largely on account of two reports at St Giles churchyard, one of which resulted in 31 needles.

Market

- Total crime in Market ward has increased from 1,122 offences in the previous period to 1,583 offences in the current period, and is also an increase on the same period last year when 1,385 offences were recorded. This increase is largely due to the rise in cycle thefts and violent crime.

- Of the eleven dwelling burglaries, two occurred on house boats on Midsummer Common and Jesus Green. Generators were stolen from both boats, along with smaller items.
- Non dwelling burglaries increased to 27 offences, the same figure as the same period last year. Almost all of them were shops or bars that had been broken into and damage caused or cash/other items stolen. The majority occurred during the night.
- Violent crime rose, to 284 offences. Approximately half were classified as Common Assault or Actual Bodily Harm, twelve of which were assaults on police officers. Offences continue to be concentrated around the night time entertainment venues and occurred late night/early in the morning. The Regal, Revolutions, The Place, Niche Bar, Fez Club and Ballare were all hotspots.
- Robberies increased to 23 in this period, eight of which have been detected. Seven offences occurred on Christ's Pieces and one on Midsummer Common. A repeated MO has been to request cigarettes or money in the first instance and to then use force. Several mobile phones were also grabbed very quickly by offenders.
- Theft from vehicles doubled to 31 offences this period (from 15 in the previous period). The offences are spread throughout the ward and are typically 'smash and grab' offences at all times of day and night.
- Theft of pedal cycles increased to 393 offences this period (from 260 in the previous period and 276 in the same period last year). The offences are spread out throughout the ward and there is no particular peak time when offences occurred. Hotspots were Parkside/Parker's Piece, St Andrew's Street/Regent Street, Grand Arcade, Trumpington Street and Fitzroy Street/Burleigh Street.
- Levels of anti-social behaviour increased from 479 incidents in the previous period to 525 incidents in the current period. A large number related to begging/vagrancy and hotspots for this were around the Grafton Centre and the Market Square. There were also a number of incidents regarding street drinking and almost all of these occurred around the Grafton Centre. As expected, many of the rowdy/inconsiderate incidents occurred at pubs/night clubs late at night/early in the morning.

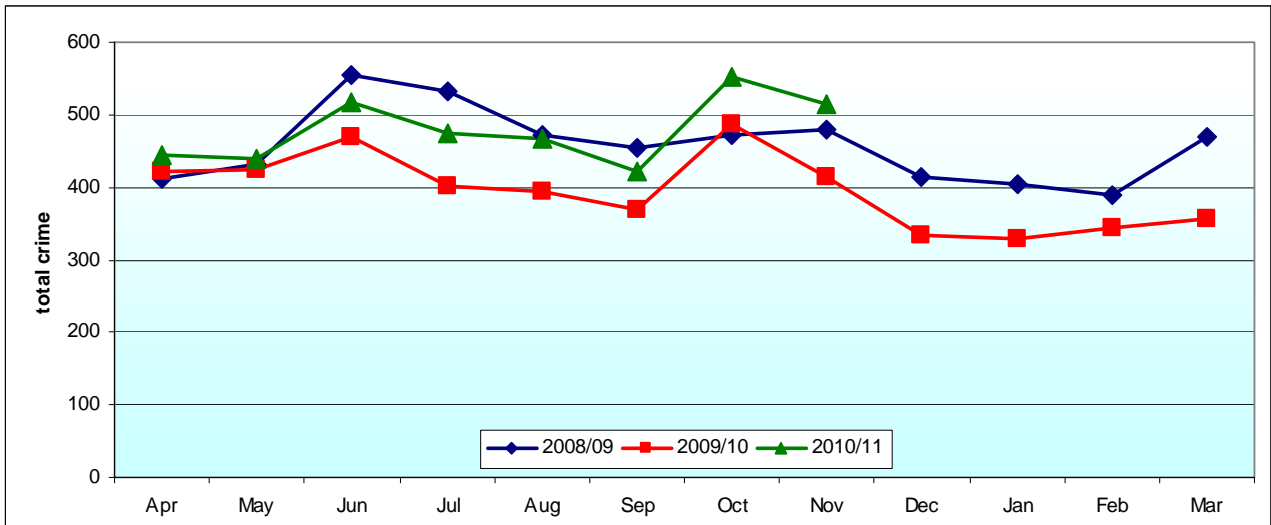
Environmental Issues

- Between July and October there were 3 reports of abandoned vehicles in the ward, compared with 6 during the same period the previous year. This included one vehicle, which was later claimed by its owner and 2 vehicles, which were not on site following inspection. There were no specific hotspots during either period.

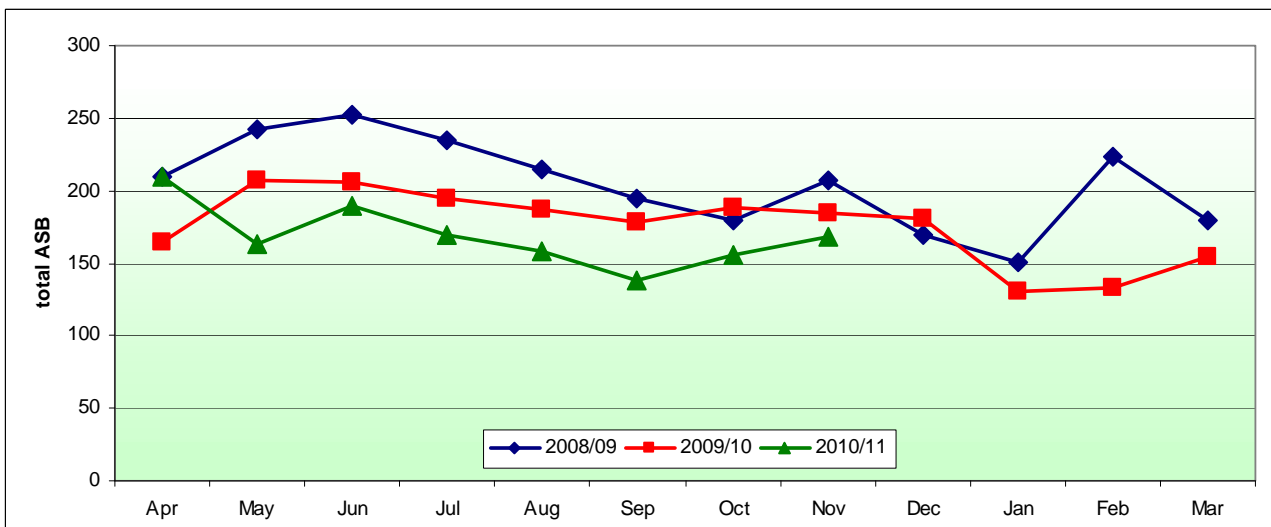
- Between July and October there were 99 reports of flytipping in the ward, compared with 154 during the same period the previous year. There was sufficient evidence to issue 5 warning letters to domestic offenders and 2 warning letters to trade offenders. In addition, 2 verbal warnings were issued and waste transfer documentation was requested from 10 trade offenders. One case was also referred to the Council's Environmental Health Department and 4 cases are currently pending further investigation. Hotspots during the 2010 period included the area of Market Hill/Street/Square (8), Regent Terrace/Street (6), Adam & Eve Street and City Road (each with 5), King Street, Petty Cury, Salmon Lane and Trinity Street (each with 4). Hotspots during the same period the previous year included the area of Market Hill/Street/Square (23), Kings Parade (13), St John's Street (10) and Corn Exchange Street (8).
- 258 derelict cycles were dealt with between July and October, compared with 384 during the same period the previous year. Hotspots during the 2010 period included Downing Street 30 (compared with 15 during the same period the previous year) Trumpington Street 26 (compared with 8 previously), Sidney Street 16 (compared with 25 previously), the area of Market Hill/Street/Square 16 (compared with 21 previously), Silver Street 13 (compared with 19 previously), Regent Street/Terrace 13 (compared with 19 previously) and St Mary's Passage 12 (compared with 9 previously). Additional hotspots during the 2009 period included Trinity Street (24), Bridge Street (22), and St Andrew's Street (19).
- Approximately 1,645 incidents of anti-social cycling occurred between July and October 2010, compared with approximately 1,766 during the same period the previous year. Hotspots included Trinity Street 371 (compared with 369 previously), the area of Market Hill/Street/Square 366 (compared with 284 previously), Bridge Street 337 (compared with 313 previously), Sidney Street 315 (compared with 388 previously) and Petty Cury 116 (compared with 143 previously).
- Between July and October there were 134 needles reported, compared with 278 during the same period the previous year. In the 2010 period this included one off finds of 32 near Silver Street toilets, 30 at Miltons Walk (also 30 during the same period last year) and 26 at the Walnut Tree Avenue edge of Midsummer Common (compared with 82 removed from Midsummer Common in the 2009 period). During the 2010 period, 24 needles were also removed from Christ's Pieces and 5 from East Road and Jesus Lane. Other needles removed during the same period last year included 61 from Grafton West Car Park, 17 from Eden Street and 15 from Trinity Street.

5. Current Crime and Incident Levels

Total Crime



Total ASB



Current Crime and Incident Levels in Neighbourhood, by Ward

			Dwell. Burg.	Other Burg.	Violent Crime (excl. Robbery)	Robbery	Theft of Vehicle	Theft from Vehicle	Cycle Theft	Theft from Shop	Criminal Damage	Other Crime	TOTAL CRIME	TOTAL ASB
N'hood	City West	<i>Aug 10 – Nov 10</i>	36	52	306	27	5	87	533	296	113	501	1956	620
		<i>Apr 10 – Jul 10</i>	49	44	213	19	9	51	343	222	87	364	1401	562
		<i>Aug 09 – Nov 09</i>	42	48	280	11	6	59	358	280	125	453	1662	738
Wards	Newnham	<i>Aug 10 – Nov 10</i>	8	15	15	3	2	37	67	1	11	40	199	45
		<i>Apr 10 – Jul 10</i>	17	10	5	2	3	19	42	2	5	33	138	37
		<i>Aug 09 – Nov 09</i>	7	7	19	1	1	16	40	3	10	25	129	49
	Castle	<i>Aug 10 – Nov 10</i>	17	10	7	1	1	19	73	7	12	27	174	50
		<i>Apr 10 – Jul 10</i>	21	14	10	1	3	17	41	2	10	22	141	46
		<i>Aug 09 – Nov 09</i>	23	14	7	3	0	17	42	3	18	21	148	65
	Market	<i>Aug 10 – Nov 10</i>	11	27	284	23	2	31	393	288	90	434	1583	525
		<i>Apr 10 – Jul 10</i>	11	20	198	16	3	15	260	218	72	309	1122	479
		<i>Aug 09 – Nov 09</i>	12	27	254	7	5	26	276	274	97	407	1385	624

ASB Incident Types in the City West Area Neighbourhood, by Ward

Please Note

Incident levels for each of the wards may not be consistent with the official figures that will be published by the Force and Home Office. This is because the data system used to draw the level of detail needed for the ASB type breakdown for this report may not contain precise locations due to the way incidents are reported e.g. ASB reported where ward boundaries lie could initially be recorded in the neighbouring ward but subsequently corrected.

These figures should only be used as a guide and not regarded as official statistics for publication.

			Abandoned Vehicle	Animal Problems	Begging/Vagrancy	Hoax call to emergency services	Litter	Malicious/Nuisance Communication	Noise	Prejudice Incident	Rowdy & Inconsiderate Behaviour	Rowdy/Nuisance Neighbours	Rowdy/Nuisance Use/Sale/Fireworks	Street Drinking	Trespass	Vehicle related nuisance/Inappropriate Vehicle use	Grand Total
N'hood	City West	<i>Aug 10 – Nov 10</i>	22	1	51	7	23	19	2	2	442	9	0	15	2	24	619
		<i>Apr 10 – Jul 10</i>	19	3	62	5	3	13	32	3	552	14	1	22	1	26	726
Wards	Newnham	<i>Aug 10 – Nov 10</i>	9	0	5	0	4	0	0	0	21	0	0	0	0	5	44
		<i>Apr 10 – Jul 10</i>	7	1	2	0	0	3	6	0	34	4	0	0	0	3	60
	Castle	<i>Aug 10 – Nov 10</i>	6	0	2	0	4	2	0	1	25	3	0	0	1	7	51
		<i>Apr 10 – Jul 10</i>	7	1	3	1	0	4	5	1	22	5	1	0	0	3	53
	Market	<i>Aug 10 – Nov 10</i>	7	1	44	7	15	17	2	1	396	6	0	15	1	12	524
		<i>Apr 10 – Jul 10</i>	5	1	57	4	3	6	21	2	466	5	0	22	1	20	613

6. Recommendations

The following Neighbourhood Priorities are recommended for consideration:

- Continue efforts to reduce theft of cycles
- Maintain focus on reducing anti-social behaviour by groups in public